

TYING THE DIGITAL KNOTS 2018

Beyond registries: A concept for integrated information management

Richard Chirchir

Senior MIS Specialist, Development Pathways

14th Sep 2018

©GIZ. All Rights Reserved



Tying the digital knots

Social protection in practice

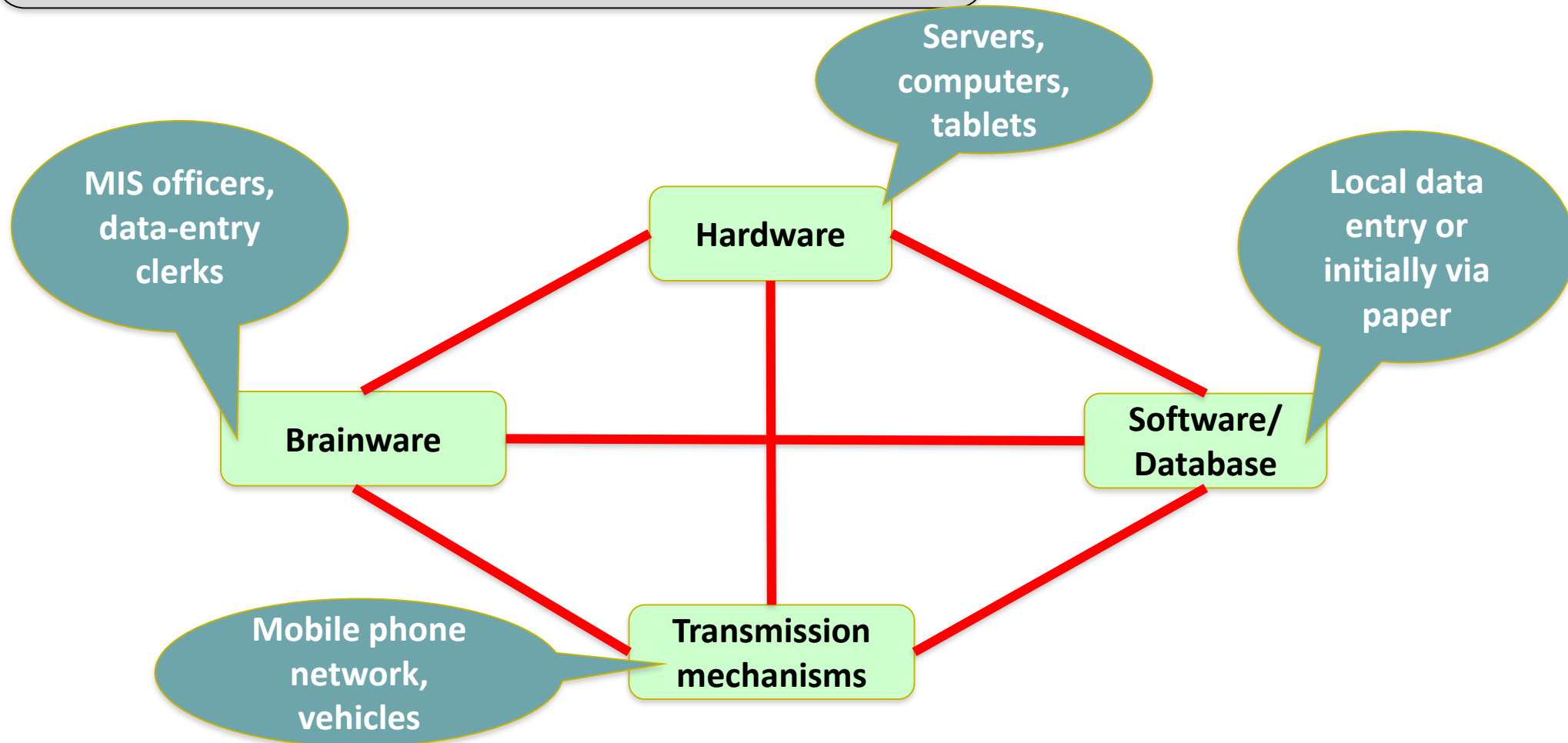
OUTLINE...

- **A. Definitions and introduction to programme MIS**
 - Components of a programme MIS
 - Beyond Registries: Conceptual Illustration of three pillars
 - **PILLAR 1**: Programme MIS functions
- **B. Integrated Social Protection Information System**
 - **PILLAR 2**: Registries as building blocks for integrated systems for information management
 - **PILLAR 3**: Linkages to Broader Registries and information systems
- **C. Requirements for establishment of integrated SP MIS**
 - Policy requirements
 - Operational needs

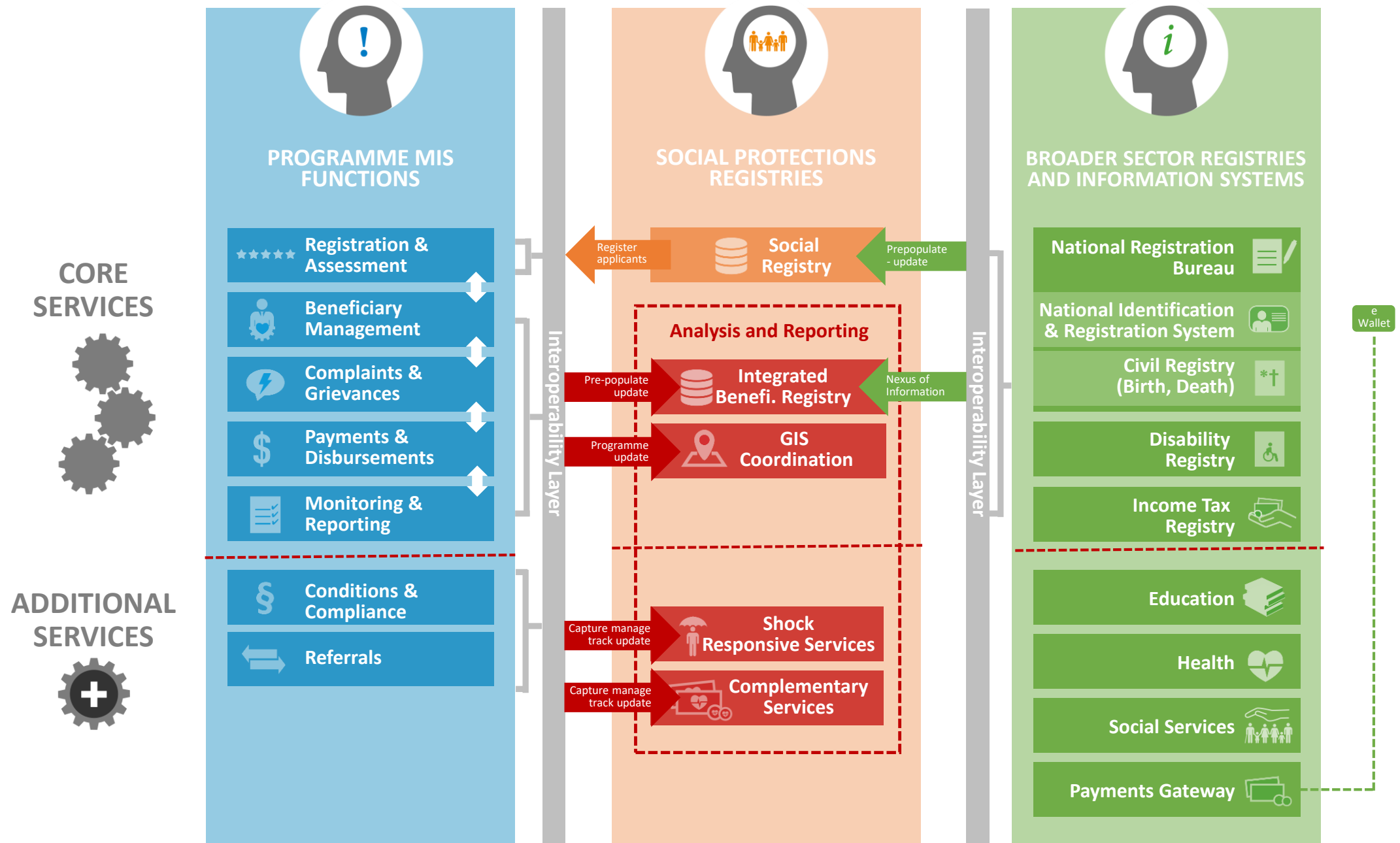
A. (i) COMPONENTS OF A PROGRAMME MANAGEMENT INFORMATION SYSTEM...

More than hardware and software:

- Comprises the capture, transmission, analysis of data and management of information



A. (ii) POTENTIAL ELEMENTS OF AN INTEGRATED SOCIAL PROTECTION INFORMATION SYSTEM...



A (iii) FUNCTIONS OF A SOCIAL PROTECTION PROGRAMME MIS...



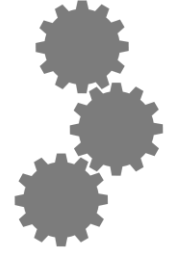
PROGRAMME MIS
FUNCTIONS

★★★★★ Registration &
Assessment

Registration & Assessment

Selection and registration of beneficiaries

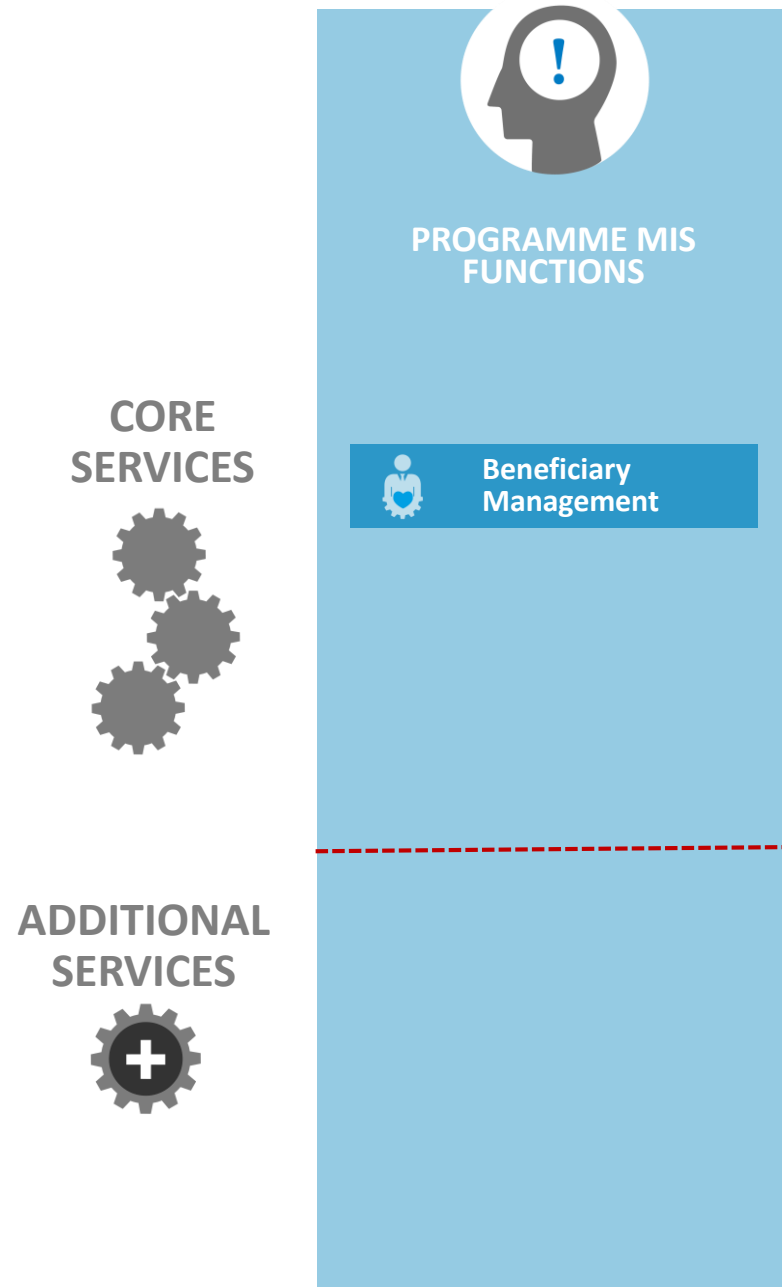
CORE
SERVICES



ADDITIONAL
SERVICES



A (iv) FUNCTIONS OF A SOCIAL PROTECTION PROGRAMME MIS...



Beneficiary Management

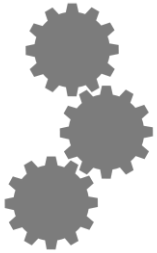
Enrolment of beneficiaries, update of beneficiary information (e.g. changes to recipients/proxies, changes of beneficiary information, Identification of those to be removed from scheme etc)

A (v) FUNCTIONS OF A SOCIAL PROTECTION PROGRAMME MIS...



PROGRAMME MIS
FUNCTIONS

CORE
SERVICES



Complaints &
Grievances

Complaints & Grievances

Management of Grievance Mechanism i.e. registration and resolution of complaints;

ADDITIONAL
SERVICES

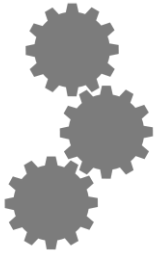


A (vi) FUNCTIONS OF A SOCIAL PROTECTION PROGRAMME MIS...



PROGRAMME MIS
FUNCTIONS

CORE
SERVICES



Payments &
Disbursements

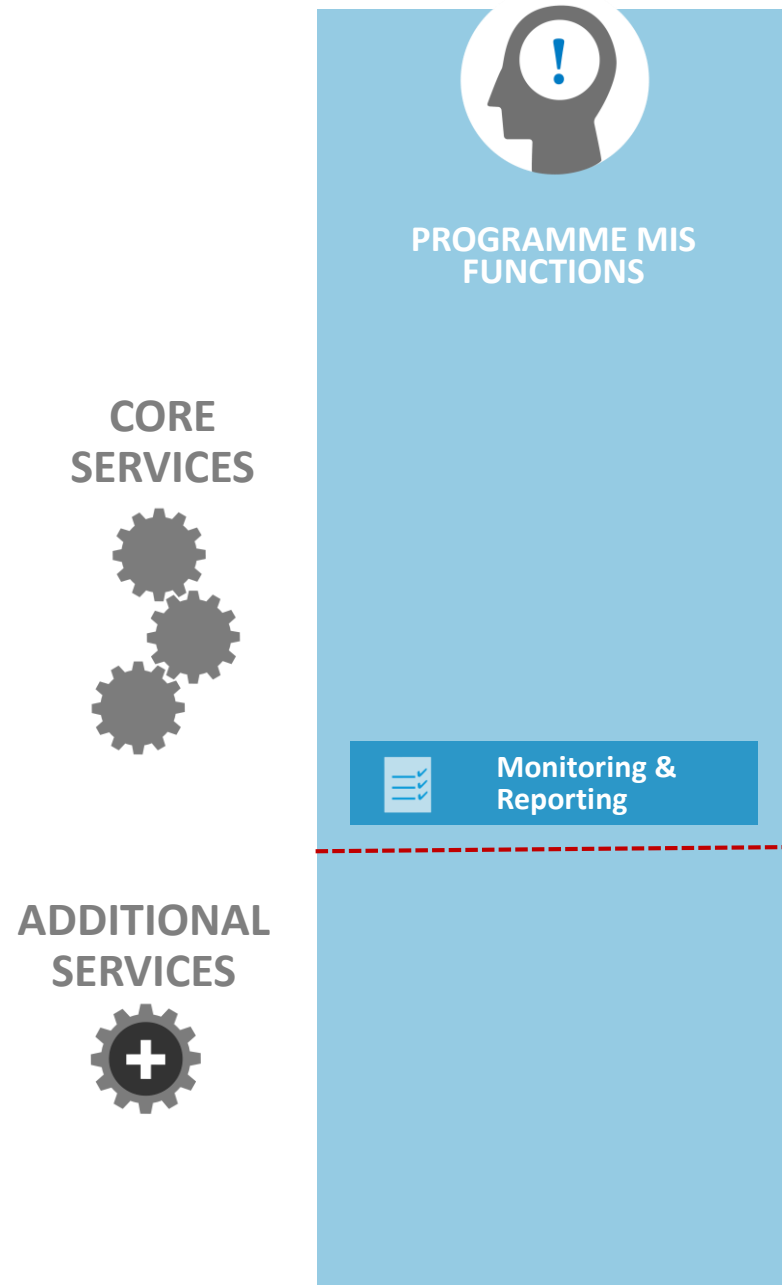
Payments & Disbursements

Production of payment lists & Reconciliation of
payment lists;

ADDITIONAL
SERVICES



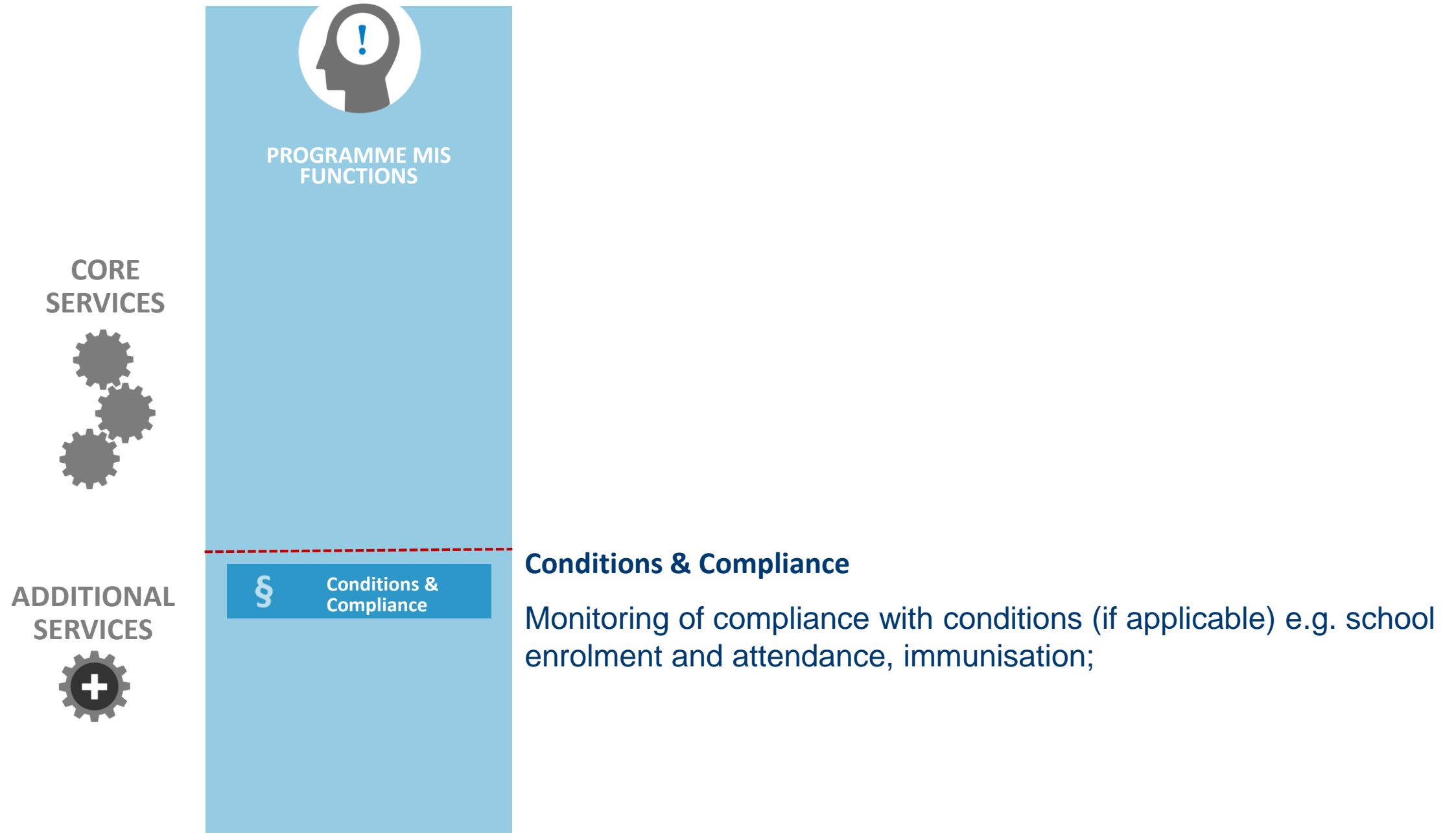
A (vii) FUNCTIONS OF A SOCIAL PROTECTION PROGRAMME MIS...



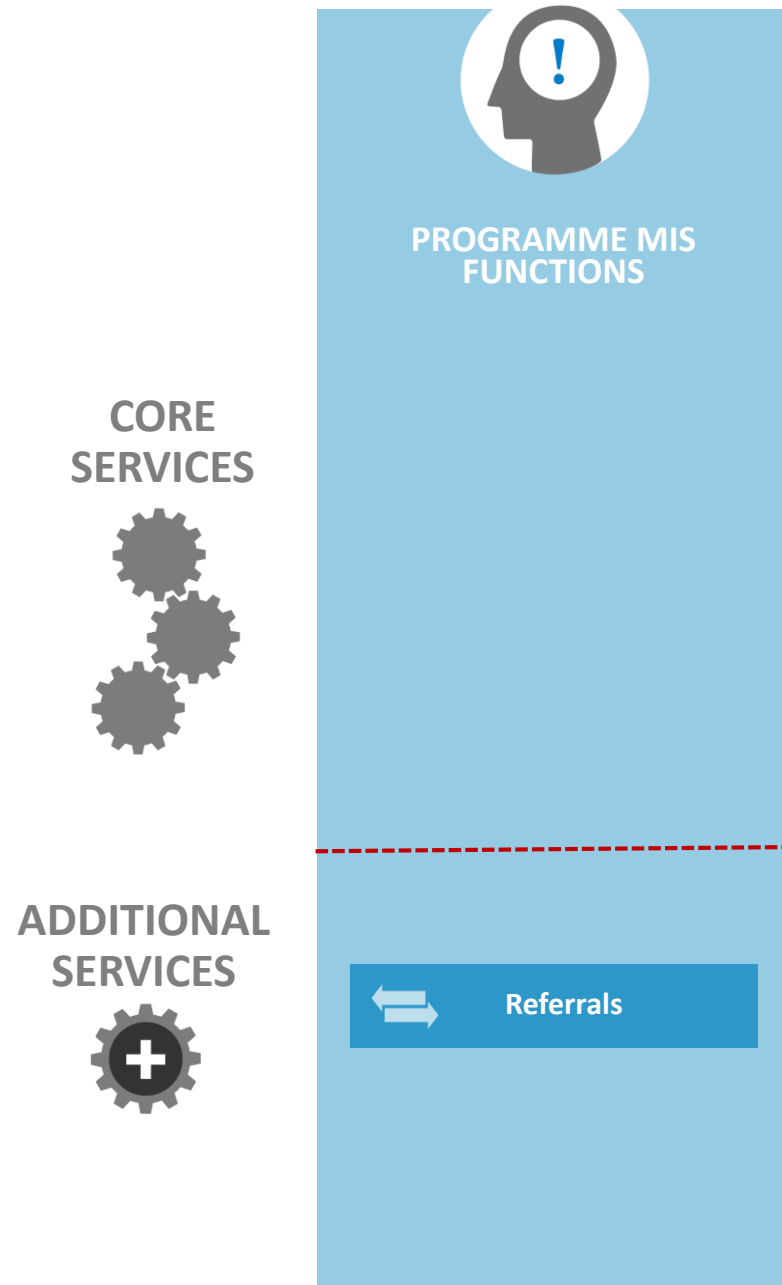
Monitoring & Reporting

Notification to programme managers when different processes have happened or should happen; and Provision of reports for management and monitoring.

A (viii) FUNCTIONS OF A SOCIAL PROTECTION PROGRAMME MIS...



A (ix) FUNCTIONS OF A SOCIAL PROTECTION PROGRAMME MIS...



Referrals

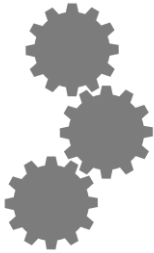
Linkages of beneficiaries of social protection programmes to social services – e.g. child protection - and monitoring these referrals

B (i) SOCIAL PROTECTION REGISTRIES...

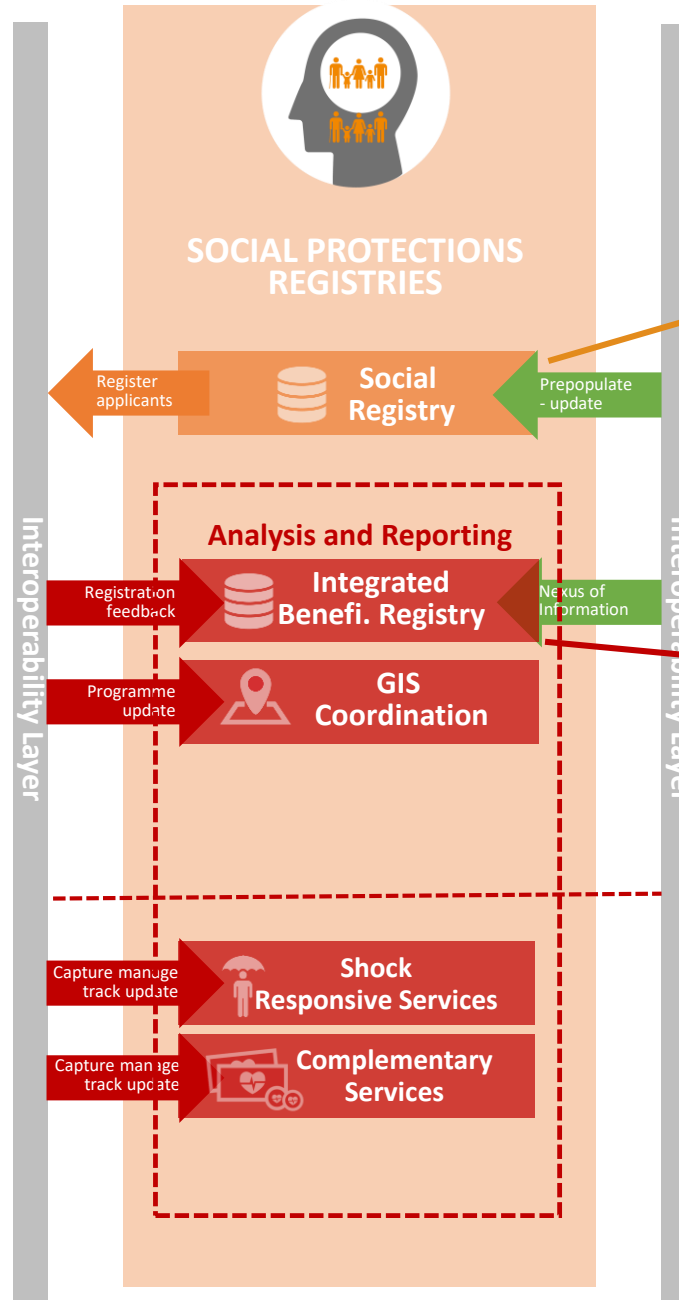
A Registry is more than any other programme MIS:

A special purpose national information system managed by dedicated institutions and underpinned by a legal framework – policies, decrees, acts of parliament etc - to be systematically used by multiple programmes for limited non-operational functions

CORE SERVICES



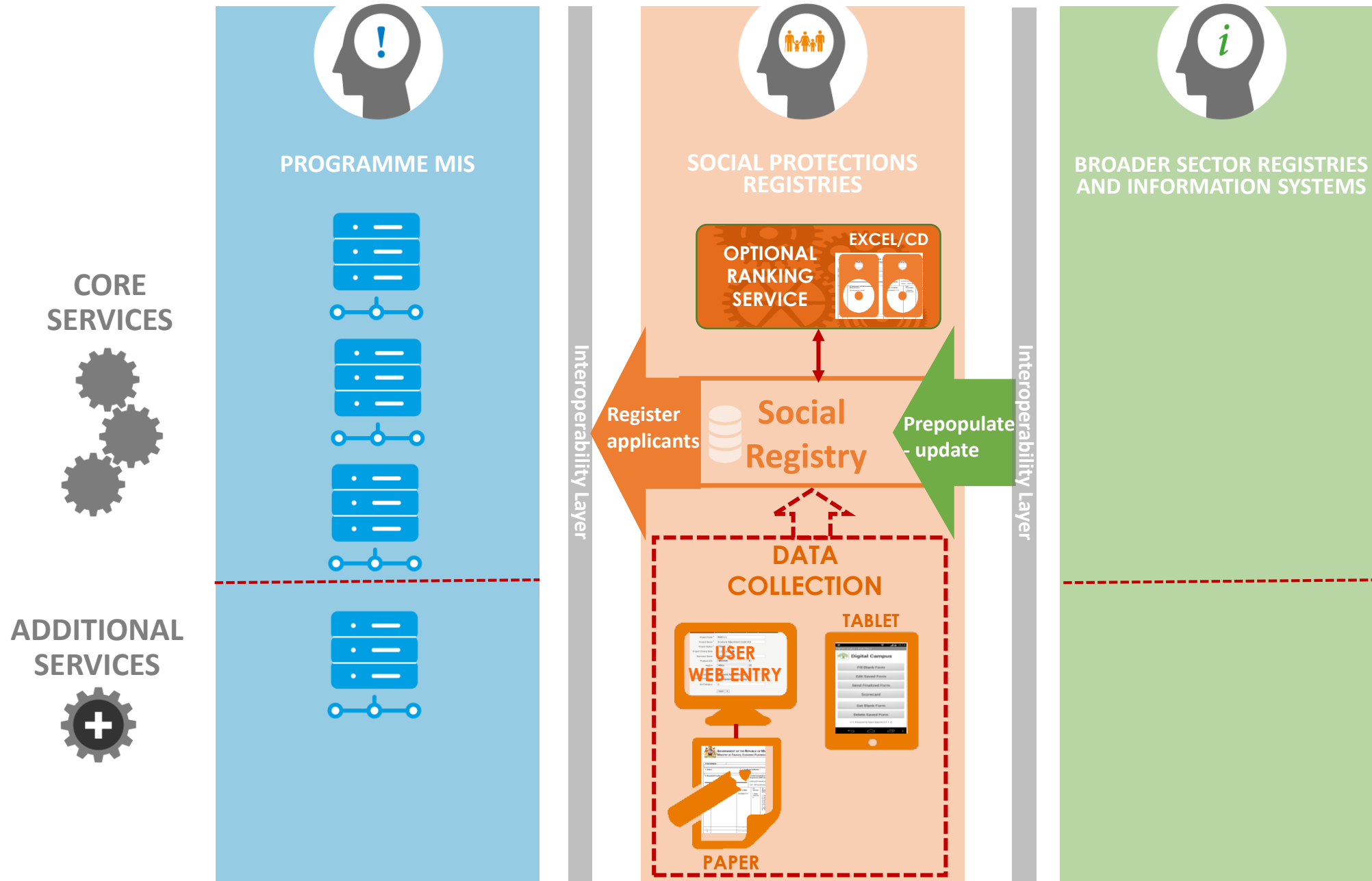
ADDITIONAL SERVICES



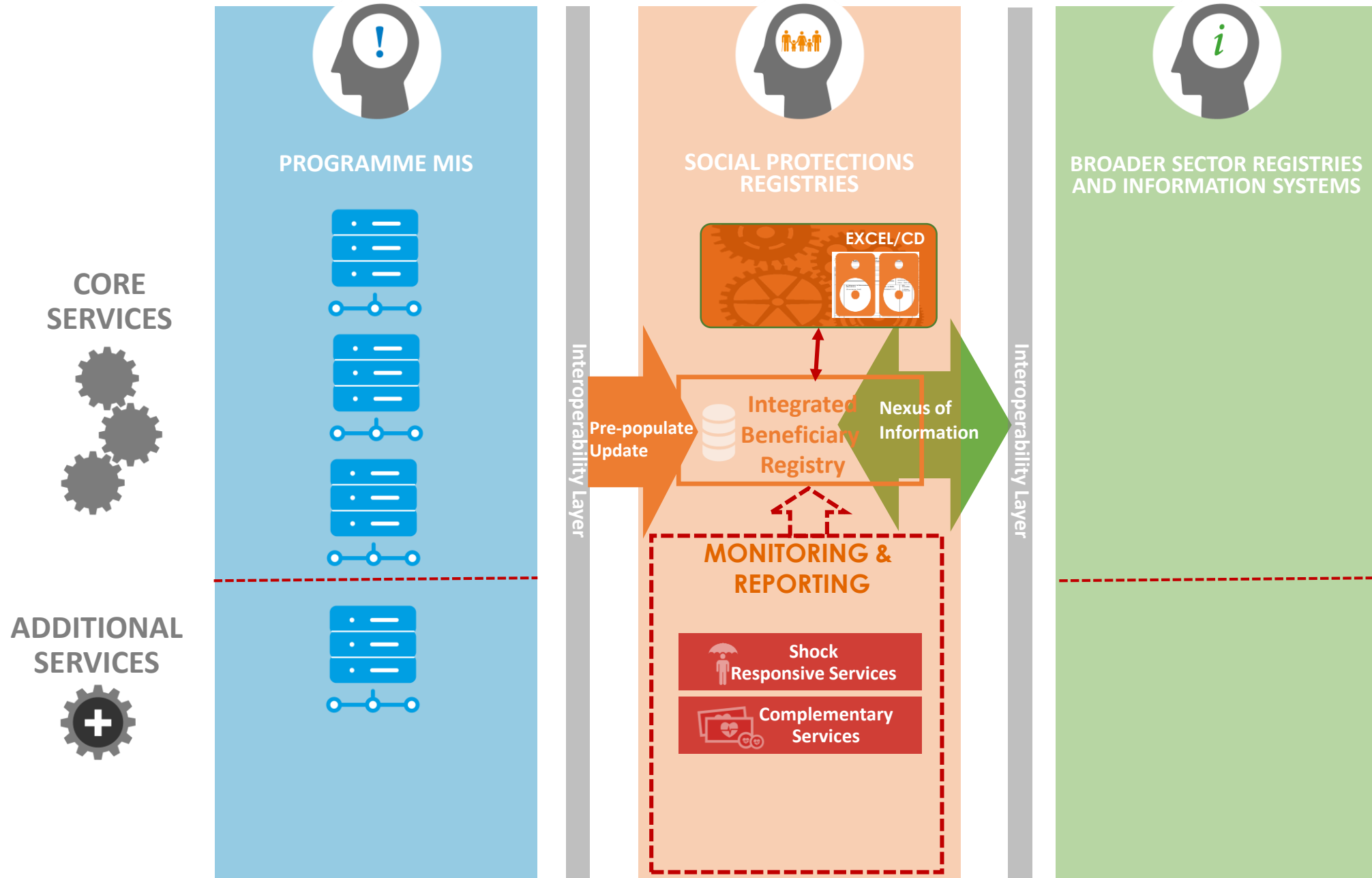
What segment of the population need social benefits?

Who is getting what benefit, where and when within social protection sector?

B (ii) COMPONENTS OF A SOCIAL REGISTRY INFORMATION SYSTEM...

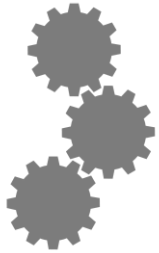


B (iii) COMPONENTS OF AN INTEGRATED BENEFICIARY REGISTRY INFORMATION SYSTEM...



B (iv) BROADER NATIONAL REGISTRIES – CIVIL REGISTRATION SYSTEMS...

CORE SERVICES



1. Foundation IDs – such as birth certificates, national IDs, death certificates - are increasingly linked to the social protection systems for verification of the applicant's authenticity
2. Functional IDs. Can be generated by social protection programmes and referenced nationally in countries that lack the foundational IDs

ADDITIONAL SERVICES



Interoperability Layer



BROADER SECTOR REGISTRIES AND INFORMATION SYSTEMS

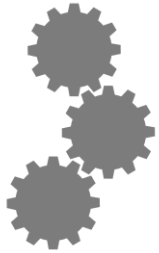
National Registration Bureau 

National Identification & Registration System 

Civil Registry (Birth, Death) 

B(v) BROADER NATIONAL REGISTRIES – DISABILITY REGISTRY...

CORE SERVICES



ADDITIONAL SERVICES



Disability agencies can establish a disability registry, which can hold a register of persons with disabilities in, including the result of a disability assessment. Potentially, this database could be linked to Social and/or Integrated Beneficiary Registries and by extension programme MISs in order to enable social protection schemes to mainstream support to disabled persons.

Interoperability Layer



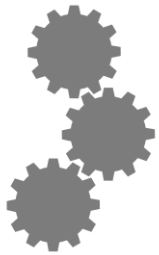
BROADER SECTOR REGISTRIES AND INFORMATION SYSTEMS

Disability Registry



B (vi) BROADER NATIONAL REGISTRIES – INCOME TAX REGISTRY...

CORE SERVICES



Social protection programmes that depend on income as a key proxy for determination of eligibility, a cross reference against a tax database to assess the veracity of an income declaration. Examples South Africa, Brazil, Sey chelles and Mauritius

ADDITIONAL SERVICES



Interoperability Layer



BROADER SECTOR REGISTRIES AND INFORMATION SYSTEMS

Income Tax Registry



C. REQUIREMENTS OF AN INTEGRATED SOCIAL PROTECTION MIS...

